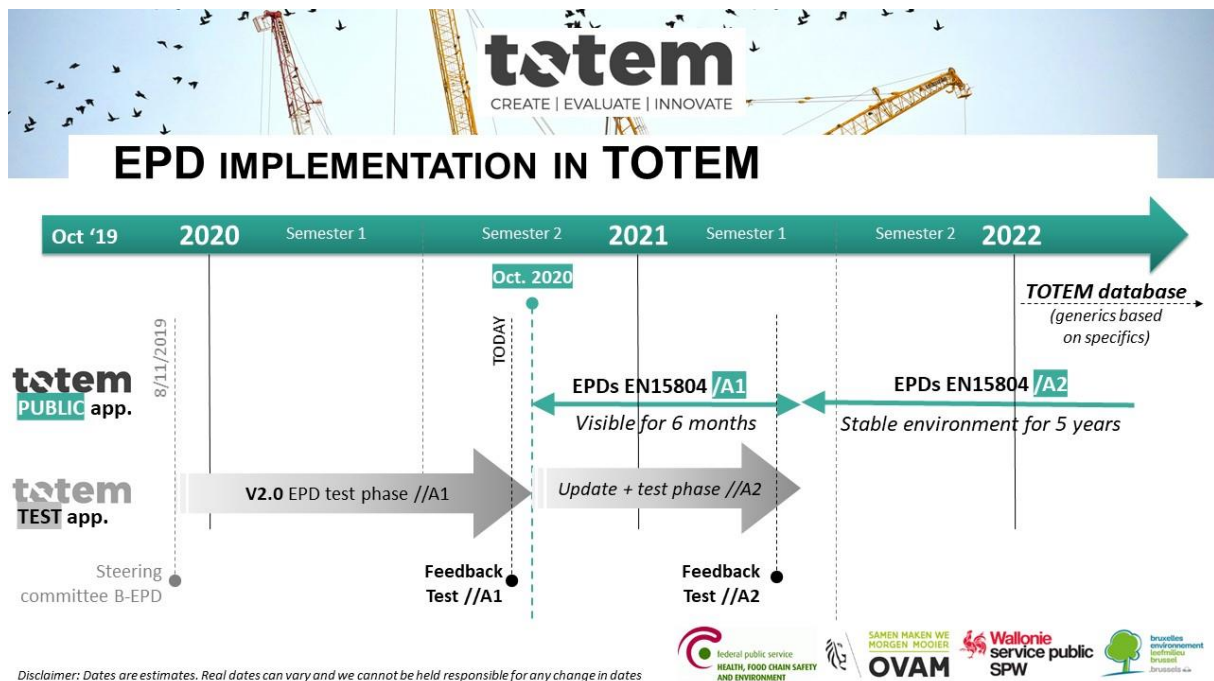


## Introduction of EPDs in the TOTEM library

Since the launch of TOTEM in 2018, **generic environmental impact data** were used to assess the impacts of buildings and elements. In 2020 TOTEM will start the integration of specific environmental impact data, declared by producers as an Environmental Product Declaration (EPD).

The EPD data will be retrieved from the Belgian **B-EPD database**. Coupling the B-EPD database to TOTEM first required a **clear and stable framework**: since November 2019 the amendment A2 to the standard EN15804 has been adopted at European level. This allows us to define the **conditions** for the integration of EPDs in TOTEM for the next **five years**.

The integration will take place in 2 steps, each time preceded by a test phase:



- In **October 2020**, a limited set of B-EPDs established within the framework of **EN15804+A1** will be integrated into the TOTEM library; they will be publically available until the transition to the framework of EN15804+A2.
- In **semester 1 of 2021**, TOTEM will undergo a major update to comply with the standard **EN15804+A2**. From then on, all verified and validated B-EPDs established according to the standard EN15804+A2 will be included in the TOTEM library. TOTEM will maintain this framework for 5 years.

If you have other **questions** regarding the EPD implementation into TOTEM or if you wish to **participate in the second test phase** (end of 2020-beginning of 2021) with B-EPDs according to EN15804+A2, you can contact the [TOTEM-helpdesk](#).

We would like to **encourage all manufacturers** to start creating their own **B-EPD** according to **EN15804+A2**; in 2021 these data will become **publicly available** for use by all TOTEM users! For specific questions regarding B-EPD you can contact the Federal Public Service of Health ([epd@health.fgov.be](mailto:epd@health.fgov.be)).